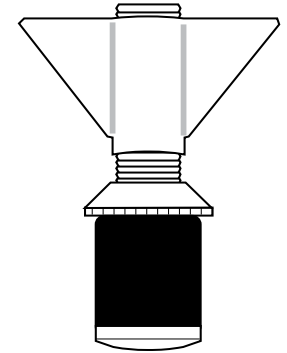




# Accu-Freeze™

## Automatically Controlled Liquid Nitrogen Pipe Freezing System

### Cryogenic Freeze Seal Jackets



HFT PIPESTOPPERS®

#### Accu-Freeze™ Accu-Jackets LN<sub>2</sub> Freeze Seal Jackets.

Now available from Huntingdon Fusion Techniques HFT®, Freeze Seal Jackets (“clam-shell” style) in addition to the standard Accu-Freeze™ kits.

These Accu-Jackets are popular with customers that need to do repeated freezes on the same size or sizes of pipe.

The amount of set-up time is greatly reduced with Freeze Seal Jackets that are manufactured to fit specific pipe sizes and are just bolted around the outside of the pipe.

The Accu-Jackets have integral injection ports which connect to the LN<sub>2</sub> feed and exhaust ports to vent the gas to atmosphere.

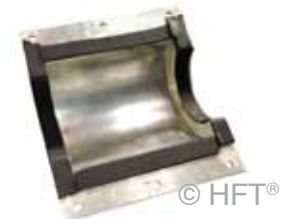
They are constructed of high-grade aluminum with a double-wall design that creates an insulating air gap between the liquid nitrogen and the ambient air outside the jackets.

#### Precision CNC Machined Aluminum Freeze Seal Accu Jackets

- Doubled walled for superior performance and added insulation.
- Easy to adapt NPT fittings.
- Rugged and long lasting for countless freezes.

#### AccuFreeze™ Accu Jackets AF1099 Adaptor Kit now available

- Introducing the new AF1099 Adaptor Kit.
- Adapts our 2 inch Accu-Jacket to fit 0.5 inch, 0.75 inch, 1 inch and 1.5 inch pipe sizes.



AF FLY Clam Shell 20-11-2018 ME

HFT Pipestoppers® a Division of Huntingdon Fusion Techniques HFT® Stukeley Meadow Burry Port Carms SA16 0BU United Kingdom (UK)  
Telephone +44 (0) 1554 836 836 Fax +44 (0) 1554 836 837 Email [hft@huntingdonfusion.com](mailto:hft@huntingdonfusion.com) [www.huntingdonfusion.com](http://www.huntingdonfusion.com) [www.argweldquickpurge.com](http://www.argweldquickpurge.com)

E&OE. Copyright © HFT. All rights reserved. This publication may not be reproduced by any means without the written permission of Huntingdon Fusion Techniques HFT® Tradenames and logos are the property of HFT and registered ownership of HFT.